

# SPECIFICATION SHEET: S039

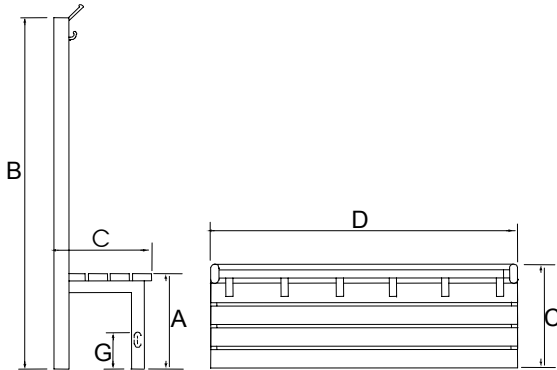
## COMMANDER SEATING FOR WET AND DRY AREAS

### SYSTEM 3300



#### Single-Sided Unit

System 3303 Standard  
System 3304 Humidity Resistant



#### Dimensions

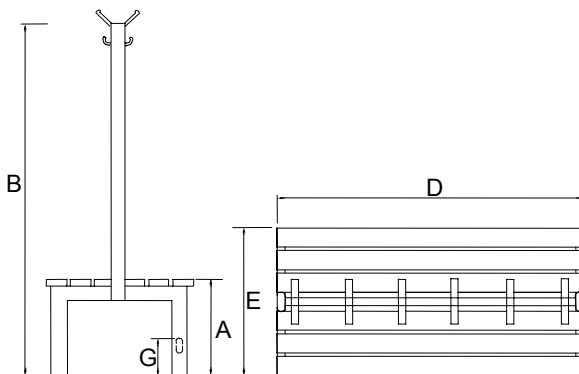
- A 450 mm
- B 1700 mm
- C 460 mm
- D 1500 mm
- E 660 mm
- F 380 mm
- G 150 mm

The standard width of the unit (D) is 1.5 m. Units to specific lengths are available.

All units supplied in flat pack for assembly on site by customer.

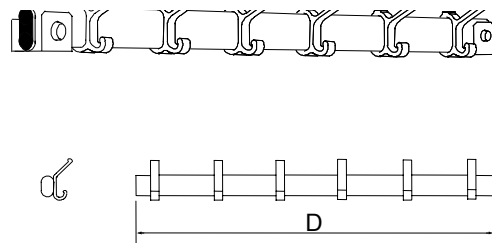
#### Double-Sided Unit

System 3305 Standard  
System 3306 Humidity Resistant



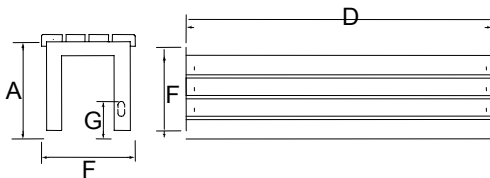
#### Wall Mounted Coat Hook Unit

System 3307 Standard  
System 3308 Humidity Resistant



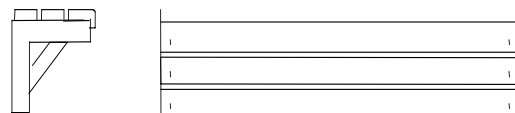
#### Wall/Island Seating Unit

System 3301 Standard  
System 3302 Humidity Resistant



#### Cantilever Seating Unit

System 3309 Standard  
System 3310 Humidity Resistant



#### Key Features

- |                      |  |
|----------------------|--|
| Sturdy Construction  | Welded frame to ensure strength and durability.                              |
| Style                | Attractive oval section frame.   |
| Floor Fixing Options | All units provided with adjustable height facility and floor fixing options. |
| Humidity Resistant   | Option available – tested to BS7479  |

## **Detailed Product Specification (Dry Area) – See Optional Extras for Humidity Resistant Specification**

### **Materials and Finish:**

Frames:	Flat sided oval rolled hollowed section mild steel.
Seating:	Durawood extruded Polymer, profiled front edge. Grey NCS 5000.
Coat Hooks:	Aluminium extrusion (epoxy powder coated). Grey NCS 5000.
Floor Fixing:	All seating units are supplied with the following fittings: Plastic bungs, hidden floor fixing brackets, adjustable foot and combination of floor fixing and adjustable foot.
Fixing side by side:	Special top bracket supplied for joining units together into runs (it is recommended the floor fixing facility is also used).

### **Optional Extras:**

Tray:	A tray can be fitted at height (G) – refer matrix, manufactured from wire mesh, black epoxy powder coated finish.
Hardwood Slats	The wood is grown specifically for furniture production and is produced by environmentally friendly procedures.
SGL Slats	Solid Grade Laminate – colours to match locker doors or cubicles.
Humidity Resistance:	Zinc plated and passivated prior to finishing with Plascoat PPA571, offering a water-resistant coating for use in high humidity and water splashing areas. <b>Tested to BS7479.</b>
Colours:	Frame finished, epoxy powder coated. Fire Red RAL 3000 Sky Blue RAL 5015 Silver Grey RAL 7001 Moss Green RAL 6005 Black
Installation:	Helmsman offers a full installation service for its products.

**After Sales Service:** All of our products are supported by the Helmsman Service Department who provide technical advice, maintenance schemes, prompt delivery of replacement keys/parts and product refurbishment.

- **Health & Safety:** It is recommended that the products referred to in the specification sheet are fixed to the floor securely in accordance with the instructions provided with the product.
- All dimensions are nominal.
- To enable us to interpret your requirements accurately please state at time of order: Type of units required, Dimensions, Colour and Delivery requirements.
- The products described in this specification sheet herein are the subjects of patent, trademark, design and copyright protection or application thereof.
- In the interest of efficiency and service to our customers, the company reserves the right to modify the specifications of any of its products.



05/00©WBB

Certificate Number FM25604

**HELMSMAN - KEEPS IT  
SAFE**



HELMSMAN

Northern Way, Bury St Edmunds,  
Suffolk, IP32 6NH, United Kingdom  
Tel: (+44) 01284 727600  
Fax: (+44) 01284 727601  
www.helmsman.co.uk