

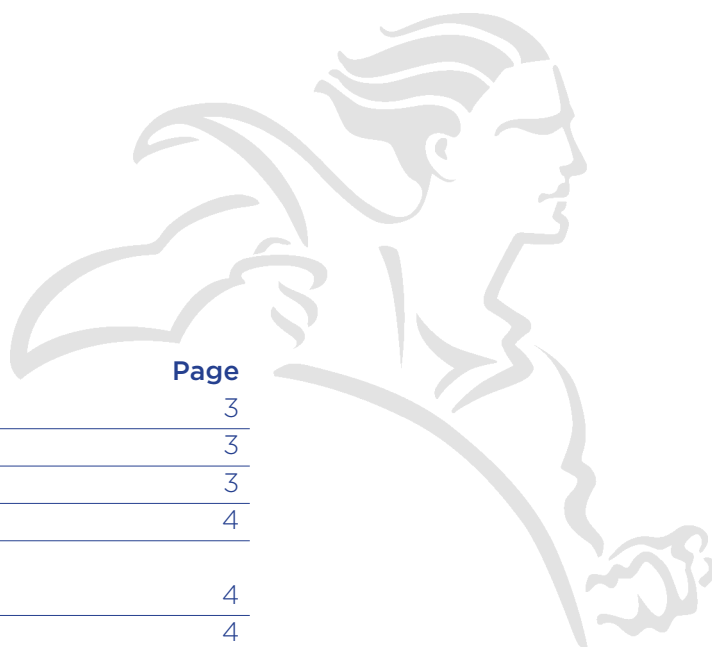


HELMSMAN

## Caring for your lockers

Spare Parts Price List

# Contents



<b>Products</b>	<b>Page</b>
REPLACEMENT KEYS	3
Asa Keys	3
Lowe & Fletcher Coin Lock Keys	3
Lowe & Fletcher Cam Lock Keys	4
REPLACEMENT LOCKS	4
Cam Locks for Vedette Lockers	4
Latch Locks & Swivel Locks for Vedette Lockers	4
Locks for Vedette Twin Lockers	4
Vedette Body and Laminate Door Cam Locks	5
Garment Dispenser and Collector Locks	5
Digital Combination Lock	5
Combination Locks	6
COIN LOCKS AND CASH BOXES	6
Asa Coin Locks & Cash Boxes	6
Lowe & Fletcher Coin Locks & Cash Boxes	6
Nimrod Locks & Cash Boxes	7
Nimrod Lock Repairs	7
LOCKER DOORS - METAL	8
Vedette Locker Doors	8
Vedette Golf Locker Doors	8
Workwear Locker Doors	9
Variant Locker Doors	9
Garment Collectors & Dispensers Doors	10
Twin Locker Doors	10
LOCKER DOORS - LAMINATE	11
System 2000 - Plant on doors	11
System 2200 - Inset doors	11
Laminate Colour Options	12
ACCESSORIES FOR LOCKERS	13
Escutcheon Plates/Oval Plates	13
Numbered Key Fobs	13
Oval Number Plates	13
Wrist straps	13
Tokens	14
Padlock options	15
CARE AGREEMENTS	14

## Helmsman Service Team

If you are looking for spare parts or a complete refurbishment, you are certain to find the solution with *Helmsman Service*. From minor lock repairs and replacement keys to a complete locker on-site service, we can cover the lot.

We can service and repair other types of locker, not just the Helmsman range of products.

This brochure details the prices of the service products. The prices do not include VAT and delivery.

If you can't find what you are looking for, please do not hesitate to call us.

### Helmsman Service

Telephone: +44 (0)1284 727633

Fax: +44 (0)1284 727603

[service@helmsman.co.uk](mailto:service@helmsman.co.uk)

# Replacement Keys

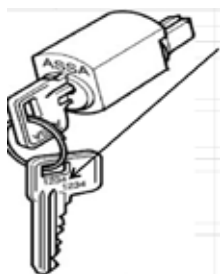
Replacement keys are cut at our factory, ensuring a relatively quick turn around time. Most key orders will be cut and dispatched within three working days.

You can also purchase master keys for your lockers.

Please see below list of keys codes we are able to cut, prices and how to find them.



## Asa Keys



**FIND THE CODE:**  
The Assa key numbers can be found either on the individual key or on the barrel of the lock. The master series is printed on each key above the key number.

Keys with the following master key codes are £5.16 each:  
**13629**  
**36220**  
**13450**

Master keys for three following codes are £8.50 each:  
**13629**  
**36220**  
**13450**

Asa keys with the following master key codes are £8.50 each:  
**32220    28220    28203**  
**13394    13217    13628**  
**13824    29220    27220**  
**37220    13394**

Master keys for three following codes are £12.50 each:  
**32220    28220**  
**13394    37220**  
**13824**

Asa Cash box keys with the following code are £8.50 each:  
**13218**

## Lowe & Fletcher Coin Lock Keys



**FIND THE CODE:**  
L & F coin lock keys, the key number can be found on the front of the barrel or stamped on the key.

We cut series **AA30** and **H** these are £5.16 each.

L & F Master Keys for the above codes are £8.50 each.

L & F Cash box keys with the following code are £8.50 each:  
**300945**

## Lowe & Fletcher Cam Lock Keys



### FIND THE CODE:

The key number is stamped on the front of the barrel or stamped on the key. Please see below for the key numbers we can cut for cam locks:

- 31-33 Series**
- 66-67 Series**
- 92-95 Series**
- 95-99 Series**
- 81-87 Series**
- 35-37 Series**
- G Series**
- A Series**

All of the cam lock keys are £2.00 each.

Master keys for cam locks are £4.15 each.

## Replacement Locks

### Cam Locks for Vedette Lockers



We can supply a wide range of cam locks for most UK manufactured lockers.

All of our cam locks are supplied with two keys and can be supplied to match existing series.

Measure here for Short Cam: 45mm

Measure here for Long Cam: 53mm  
(Key code denotes series number.)

Lock Type	Part No.	Price
31 - 33 Series Lock - Short Cam	lok0001	£4.50 each
31 - 33 Series Lock - Long Cam	lok4001	£4.50 each
95 - 97 Series Lock - Short Cam	boi178	£4.50 each
95 - 97 Series Lock - Long Cam	lok5010	£4.50 each
Paired locks for Vedettes 31 - 33 series	lok1004	£9.00 per pair
Paired locks for Vedettes 95 - 97 series	boi765	£9.00 per pair

### Latch Locks & Swivel Locks for Vedette lockers



Latch Locks



Swivel Latch Locks



### Latch Locks

Lock Type	Part No.	Price
Left Hand Short Cam	lok0003	£4.50 each
Left Hand Long Cam	lok4003	£4.50 each
Right Hand Short Cam	lok0004	£4.50 each

### Swivel Latch Locks

Lock Type	Part No.	Price
Left Hand Short Cam	lok0003/sw/8mm	£4.50 each
Left Hand Long Cam	lok4003/sw/8mm	£4.50 each

### Vedette Twin & Big Twin Locks



Lock Type	Part No.	Price
Left Hand 31 - 33 Series Paired	lok1029	£9.00 per pair
Left Hand 95 - 97 Series Paired	boi738	£9.00 per pair

## Vedette body & laminate door Cam Locks



Lock Type	Part No.	Price
Left Hand 31 - 33 Series	lok2016	£9.00 each
Left Hand 95 - 97 Series	lok2028	£9.00 each

## Garment Dispenser & Collector Locks



Lock Type	Part No.	Price
X95662 Frame Lock	boi106	£4.50 each
31662 Garment Dispenser C Frame Lock	lok0103	£4.50 each
95 - 97 Garment Dispenser Compartment Lock	boi105	£4.50 each
31 - 33 Garment Dispenser Compartment Lock	lok0102	£4.50 each
95662 Garment Collector Lock	boi101	£4.50 each
31662 Garment Collector Lock	lok0101	£4.50 each

Latch Locks and Swivel Locks are also available for the garment Dispensers & Collectors at the above prices.

If you can not find the lock you require then please contact us and we will be happy to assist you with your requirements.



Garment Dispenser C Frame Lock



Garment Collector Lock



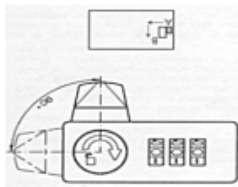
Garment Dispenser Main Door Lock

## Digital Combination Lock



Lock Type	Part No.	Price
Digital combination lock	lfdc10001	£28.90 each

## Combination Locks



Sudhaus type



VF type



L&F type

Lock Type	Part No.	Price
Sudhaus for Vedette Lockers - Left Hand	boi812	£5.95 each
Sudhaus for Garment Dispensers - Right Hand	boi951	£5.95 each
Master FOIL Key for Sudhaus Locks	boi834	£4.15 each

Lock Type	Part No.	Price
VF A199 Lock C0051	lfcombi1001	£16.25 each
C0051 Master Key	lfcombi9101	£4.15 each

### L & F Small Dial Combination Locks

Please contact us for your requirements.

Locks are £6.50 each.

Master Keys are £4.15 each.

## Coin Locks and Cash Boxes

### Assa Coin Locks & Cash Boxes



Assa coin locks for £1, 50p, 20p Coin,

Token or key card or set to free use.

#### Master Series 13629

Lock Type	Price
Assa Short Fixed Key Barrel (19mm) Locks Wet or Dry	£39.61 each
Assa Long Fixed Key Barrel (29mm) Locks Wet or Dry	£39.61 each
Assa Locks with Removable (29mm) Key Barrel	£42.95 each
Assa Removable Key Barrels (29mm)	£18.95 each
Assa Removable Barrel key	£8.50 each
Assa Cash Box - 13218	£27.50 each
Assa Cash Box Key - 13218	£8.50 each

### Lowe and Fletcher Coin Locks & Cash Boxes



Lowe & Fletcher coin locks for £1,

50p, 20p coins, Token or key card

or set to free use.

#### Master codes - AA30 or HOH2M

Lock Type	Price
Lowe & Fletcher Short Fixed Key Barrel (19mm) Locks Wet or Dry	£39.61 each
Lowe & Fletcher Long Fixed Key Barrel (29mm) Locks Wet or Dry	£39.61 each
Lowe & Fletcher Locks with Removable (29mm) Key Barrel	£42.95 each
Lowe & Fletcher Removable Key Barrels (29mm)	£18.95 each
Lowe & Fletcher Removable Barrel Key - Master Series AA30	£8.50 each
Lowe & Fletcher Cash Box - 300945	£27.50 each
Lowe & Fletcher Cash Box Key - 300945	£8.50 each

## Nimrod Locks & Cash Boxes



Nimrod control cylinders



Black Nimrod control key code



Nimrod Patron cylinders and keys with or without orange key caps



Cash box cylinders



Nimrod Patron cylinders and keys for use with wrist straps

Nimrod coin locks for use with £1, 50p, 20p, 10p coins or Tokens.

Lock Type	Price
Nimrod Control Cylinders	£15.25 each
Black Nimrod Control Key codes (can be found on the front of the control Cylinder).	£8.95 each
New Nimrod Lock - Includes Control Cylinder and New Barrel with Key	£82.50 each
Refurbished Nimrod Lock - Includes Control Cylinder and New Barrel with Key	£62.50 each
New Nimrod Patron Cylinders and keys with or without orange key caps	£20.95 each
Exchange Nimrod Patron Cylinders and keys with or without orange key caps	£9.95 each
New Nimrod Patron Cylinders and keys for use with wrist straps	£18.95 each
Exchange Nimrod Patron Cylinders and keys for use with wrist straps	£8.95 each
Nimrod Cash Boxes - Includes Cash Box Cylinder	£26.50 each
Cash Box Cylinders	£15.25 each
White Nimrod Cash Box Key codes (can be found on the front of the cash box cylinder).	£8.95 each

## Nimrod Lock Repairs

### Minor Repair - £11.40 per lock

Minor lock repairs include an ultrasonic clean of the mechanism, a thorough check of the lock mechanism and re-labelled.

### Intermediate Repair - £16.25 per lock

Intermediate lock repairs include adjustment of any minor parts that require disassembly and reassembly of the mechanism, minor parts include coin selector, coin hold pawl, spring control cap and control screw. Mechanism ultrasonically cleaned, a thorough check of the lock mechanism and re-labelled.

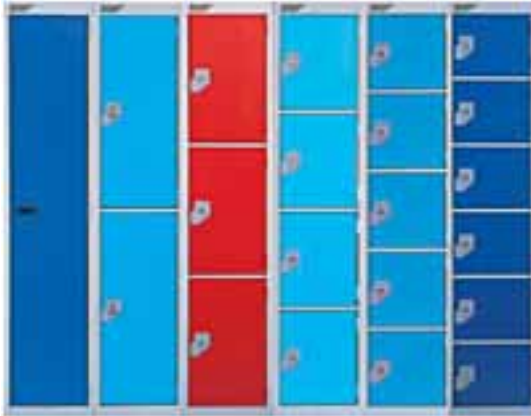
### Major Repair - £27.75 per lock

Major lock repairs include adjustment of any major parts that require disassembly and reassembly of the lock mechanism, major parts include lock bolt, control or patron cylinder, patron cylinder cam assembly, control cap, latch pawl and cylinder housing. The mechanism will be ultrasonically cleaned, face plates and/or coin Shute distortion repaired, lock mechanism thoroughly checked and re-labelled.

# Locker Doors - Metal

Please state lock type when ordering. Lock and escutcheon plate are not included with new doors.

## Vedette Locker Doors



**Old Type:** you can see the cross member in-between the locker doors (as picture).  
**New Type:** The doors are flush to each other so the cross member is hidden.

Description	Door size	Part No.	Price
Full length door	255mm X 1600mm	asd004	£19.75 each
2 comp door (Old type)	255mm X 820mm	asd005	£16.45 each
2 comp door (New type)	255mm X 830mm	asd1005	£16.45 each
3 comp door (Old type)	255mm X 540mm	asd057	£14.25 each
3 comp door (New type)	255mm X 550mm	asd1057	£14.25 each
4 comp door (Old type)	255mm X 400mm	asd006	£12.05 each
4 comp door (New type)	255mm X 410mm	asd1006	£12.05 each
5 comp door (Old type)	255mm X 320mm	asd007	£10.95 each
5 comp door (New type)	255mm X 330mm	asd1007	£10.95 each
6 comp door (Old type)	255mm X 260mm	asd008	£9.85 each
6 comp door (New type)	255mm X 270mm	asd1008	£9.85 each

Full length door	335mm X 1600mm	asd009	£20.85 each
2 comp door (Old type)	335mm X 820mm	asd010	£17.55 each
2 comp door (New type)	335mm X 830mm	asd1010	£17.55 each
3 comp door (Old type)	335mm X 540mm	asd5047	£15.35 each
3 comp door (New type)	335mm X 550mm	asd1059	£15.35 each
4 comp door (Old type)	335mm X 400mm	asd011	£14.25 each
4 comp door (New type)	335mm X 410mm	asd1011	£14.25 each
5 comp door (Old type)	335mm X 320mm	asd012	£12.05 each
5 comp door (New type)	335mm X 330mm	asd1012	£12.05 each
6 comp door (Old type)	335mm X 260mm	asd013	£10.95 each

Full length door	405mm X 1600mm	asd018	£21.95 each
2 comp door (Old type)	405mm X 820mm	asd019	£18.65 each
2 comp door (New type)	405mm X 830mm	asd1019	£18.65 each
3 comp door (Old type)	405mm X 540mm	asd1021	£17.55 each
4 comp door (New type)	405mm X 400mm	asd020	£15.35 each
4 comp door (Old type)	405mm X 410mm	asd1020	£15.35 each

## Vedette Golf Locker Doors

Golf High Locker Doors			
4 Compartment Doors	380mm X 290mm	asd017	£11.95 each
Golf Professional High Locker Full Length Doors	380mm X 1160mm	asd015	£15.00 each
Golf Club High Locker Full Length Doors	380mm X 1160mm	asd015	£15.00 each
Golf Classic Low Locker Welled Doors	380mm X 865mm	asd016	£13.00 each



## Work Wear Locker Doors

Coat Hook  
Part Number - boi168 - £1.00 each

380mm Wide Coat Rail  
Part Number - mis147 - £1.00 each

450mm Wide Coat Rail  
Part Number - mis148 - £1.05 each

380mm Wide Full Length Door Part  
Number asd009 - £20.85 each

450mm Wide Full Length Door Part  
Number asd018 - £21.95 each

380mm Wide Welled Door  
Part Number asd014 - £18.55 each



## Variant Locker Doors

Variant Locker Doors are metal doors for use with coin locks.

**Old Type:** you can see the cross member in-between the locker doors.

**New Type:** The doors are flush to each other so the cross member is hidden.

**PLEASE CONTACT US IF YOUR SIZE IS NOT LISTED.**

Description	Door size	Part No.	Price
2 comp door (Old type)	255mm X 820mm	asd005	£32.95 each
2 comp door (New type)	255mm X 830mm	asd1005	£32.95 each
3 comp door (Old type)	255mm X 540mm	asd057	£27.45 each
3 comp door (New type)	255mm X 550mm	asd1057	£27.45 each
4 comp door (Old type)	255mm X 400mm	asd006	£24.15 each
4 comp door (New type)	255mm X 410mm	asd1006	£24.15 each
5 comp door (Old type)	255mm X 320mm	asd007	£20.85 each

## Garment Collectors & Dispenser Doors



Description	Door size	Part No.	Price
GD 5 comp door	306mm X 332mm	dor018	£7.65 each
GD 10 comp door	306mm X 165mm	dor019	£5.45 each
GD 15 comp door	306mm X 110mm	dos021	£4.35 each
GD 20 comp door	306mm X 80mm	dor023	£3.25 each
Collector door	306mm X 1720mm	asd056	£21.95 each
GD C frame	N/A	asf054	£17.55 each

## Twin & Big Twin doors



Description	Door size	Part No.	Price
Twin Top door L/H	336mm x 191mm	asd023	£10.95 each
Twin Top door R/H	336mm x 191mm	asd024	£10.95 each
Big twin Top door L/H	336mm x 276mm	asd025	£10.95 each
Big twin Top door R/H	336mm x 276mm	asd026	£10.95 each
Bottom door L/H	151mm x 1241mm	asd021	£14.25 each
Bottom door R/H	151mm x 1241mm	asd022	£14.25 each

Right Hand Door

Left Hand Door

### Colour Options for Metal Doors

These colours are our standard range.  
We are able to match any RAL colour,  
subject to an additional charge.



ICE (BS 18 B 19)



BLACK (RAL 9005)



YELLOW (RAL 1003)



FOREST GREEN (BS 14 C 39)



SMOKE (RAL 7031)



ROCKPOOL (RAL 6027)



CHERRY (RAL 3031)



ROYALE (RAL 5002)



SKYE (BS 18 E 51)



WHITE (RAL 9010)

# Locker Doors - Laminate

## System 2000 - Plant on doors



Lock spacer  
Part Number - boi169  
Price 99p each



Oval Hinge Cover  
Black or Grey  
Price £1.05 each  
Part Number:  
ac2001/za5

Description	Width	Part No.	Price
1 Comp	300mm	asl4000	£43.00 each
2 Comp	300mm	asl4001	£39.00 each
3 Comp	300mm	asl4002	£37.00 each
4 Comp	300mm	asl5105	£44.00 each
5 Comp	300mm	asl4021	£46.00 each
6 Comp	300mm	asl4022	£40.00 each

## System 2200 - Inset doors

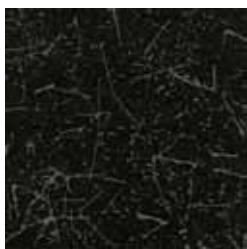


Inset Hinge  
Part Number:  
ash2002  
Price - £6.95 each

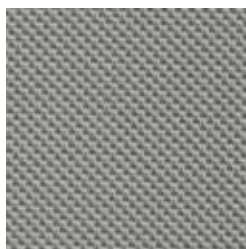
Escutcheon Plate  
Part Number:  
pm2007  
Price - 99p each

Description	Width	Part No.	Price
1 Comp	300mm	asl2014	£84.00 each
2 Comp	300mm	asl2007	£42.00 each
3 Comp	300mm	asl2008	£38.00 each
4 Comp	300mm	asl2009	£36.00 each
5 Comp	300mm	asl2010	£28.00 each
6 Comp	300mm	asl2011	£26.00 each
8 Comp	300mm	asl2012	£22.00 each
2 Comp	380mm	asl2032	£44.00 each
3 Comp	380mm	asl3033	£42.00 each
1 Comp	300mm	asl2013	£85.00 each
2 Comp	300mm	asl2001	£43.00 each
3 Comp	300mm	asl2002	£39.00 each
4 Comp	300mm	asl2003	£37.00 each
5 Comp	300mm	asl2004	£29.00 each
6 Comp	300mm	asl2005	£27.00 each
8 Comp	300mm	asl2006	£23.00 each
1 Comp	380mm	asl2038	£86.00 each
2 Comp	380mm	asl2027	£44.00 each
3 Comp	380mm	asl2028	£40.00 each

# Laminate Colours



BLACK CRAQUELÉ



MICRO GREY



MID GREY



WHITE



SILVER GREY



MELON YELLOW



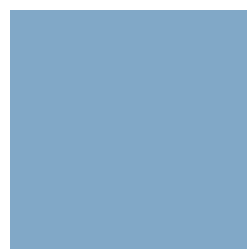
SAND



GOLD YELLOW



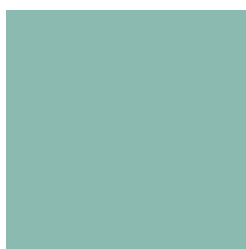
POPPY RED



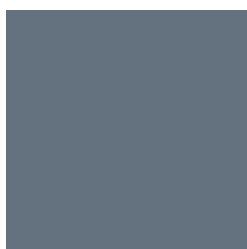
POWDER BLUE



AQUA BLUE



AQUAMARINE



STEEL BLUE



SPECKLED HEAVEN BLUE



SPECKLED LIGHT BLUE



SPECKLED WHITE



SPECKLED SILVER GREY



SPECKLED SAND



SPECKLED POWDER BLUE



SPECKLED AQUAMARINE



SPECKLED ICEY BLUE

These colours are reproduced as accurately as printing processes allow. Actual samples are available on request.

# Accessories for Lockers

## Escutcheon plates/Oval plates



Vedette



Oval

Escutcheon plates are available for left or right handed doors.

These can be used for cam locks on vedette doors or coin locks on Variant Doors.

All escutcheon plates are 99p each.  
 boil69 vedette LH  
 boi517 variant  
 pm2007 oval esc  
 boi172 vedette RH  
 bio518 variant RH

Oval escutcheon plates are used with coin locks on our system lockers with laminate doors.

They are available in Black or Ice.

All oval escutcheon plates are 99p each.

## Numbered Key Fobs

Numbered Key Fobs are available in the following colours:

**Red, Green, White, Black, Yellow, Burgundy, Blue, Gold, Silver**

All key fobs are 99p each.  
 Split rings are 20p each.



## Oval Number Plates

Oval number plates are 99p and are available in the following colours:

**Red, Green, White, Black, Yellow, Blue, Gold, Silver**

Oval number plates are also available in Braille (Black only).



## Wrist straps



Wrist straps are available for use with coin locks and come in the following colours:

**Brown, Red, White, Green, Blue, Black, Yellow, Orange**

Wrist straps are available with or without numbers.

Numbered Wrist Straps: £3.69 each

Un-numbered Wrist Straps: £3.16 each



We also supply thick rubber band wrist straps, these are available in the following colours: **Red, Green, White, Black, Yellow, Blue**



Lowe & Fletcher Wrist Straps have a key shape recess and come with a rivet set to attach the key.



Assa Wrist Straps have an offset recess and come with a rivet set, half moon and key sheath to attach the key.



Nimrod Wrist Straps have a central recess and come with a rivet set, black key holder and key sheath.

## Tokens



### Eurocoin Token - BOC387

Diameter 2.2cm  
Front of token reads:  
EUROCOIN  
Back of token  
reads: EUROCOIN  
LONDON



### Small Helmsman Token - BOI187

Diameter 2.3cm  
Front of token reads:  
HELMSMAN BURY ST  
EDMUNDS  
Back of token reads:  
LOCKER TOKEN



### Large Helmsman Token - BOI753

Diameter 3cm  
Front of token reads:  
HELMSMAN BURY ST  
EDMUNDS  
Back of token reads:  
LOCKER TOKEN



### Small Eagle Token - BOC270

Diameter 2.5cm  
Front of token  
reads: FREEDOM  
with an image of  
an eagle. Back of  
token reads: NO  
CASH VALUE



### Large Eagle Token - BOC270

Diameter 2.8cm  
Front AND back  
of token bears  
an image of an  
eagle

## Service Care for your Lockers

HELMSMAN

This guide details the options available to you as a Helmsman customer. We have different choices to suit environment, convenience and of course, budget. All prices are on application.

### Option 1. PAY AS YOU GO

This "Pay as you Go" option will mean the service team will assist you in finding out the parts you require from the information you provide via the telephone or email.

- We will collate and provide prices for the parts required.
- You will need to provide a purchase order.
- Parts will be ordered and sent to you in 10 to 14 days.
- You will need to fit the parts yourself.  
(Please call us for information on fitting parts)

### Option 2. PAY AS YOU GO - INSTALL

This option enables you to place an order for parts as Option 1, and instead of us sending parts for you to fit we will come out to your site and fit them for you.

- This agreement covers you for one visit per year.
- This agreement will include a charge for travel and labour between 8am and 5pm.

### Option 3. SITE SURVEY AND INSTALL - ONE VISIT

If you are unsure of your requirements and don't have the time or staff free to survey your changing area yourself, this option is hassle free.

- We will arrange for a Helmsman engineer to visit and survey your products.
- We will supply you with a quotation for the parts needed.
- Once you have placed your order we will come to site and fit the parts for you.
- This agreement covers you for one visit per year.
- This agreement will include a charge for travel and labour between 8am and 5pm.

### Option 4. SITE SURVEY AND INSTALL - TWO VISITS

If your usage is high you may require two visits a year to ensure your products are shipshape. This is the same as "site survey and Install".

- Same as Option 3, but two visits per year.
- This agreement will include a charge for travel and labour between 8am and 5pm.

### Option 5. SITE SURVEY AND INSTALL - FOUR VISITS

If your usage is high you may require four visits a year to ensure your products are shipshape. This is the same as "site survey and Install".

- Same as Option 3, but four visits per year.
- This agreement will include a charge for travel and labour between 8am and 5pm.

## Site surveys

The Helmsman site survey consists of the following:

- All doors to be checked for operation.
- All door hinges to be checked and lubricated using the correct Helmsman Super Lube.
- The self closing springs to be checked for operation.
- All doors to be checked for vandalism and other damage.
- All doors to be checked that they fit securely and are not distorted in any way.
- All locker tops, bases and shelves to be checked for damage.
- Each lock mechanism to be assessed and tested with the relevant coins or tokens.
- A full check of all keys for fit in the lock and ease of operation. Any replacement key numbers needed will be documented.
- All wristbands will be checked for signs of wear and tear.

# Padlocks

## B & G Padlocks

Single locking shackle, spring opening & closing.  
Brass 32mm body  
Supplied with 2 Brass keys per padlock.  
These padlocks have 3500 differs or can be supplied keyed alike to pass the same key.  
Can be supplied to differ in suits to be operated by their own individual servant keys and by an overriding master key.  
Part Number - boi623 - 4.7mm Shackle £4.95 Each  
Part Number - boi835 - 6.3mm Shackle £5.95 Each



## Tri-cycle Padlocks

Chrome plated locking shackle  
38mm Brass body  
Supplied with 2 Brass keys per padlock.  
Rustproof interior  
Supplied complete with three keys per padlock  
Part Number - boi830 - 6.2mm Shackle  
Price - £5.50 Each



## IFAM Brass Padlocks

28mm brass body  
4.5mm Shackle  
Chrome-plated and hardened steel shackle.  
Opening system operated by four rollers.  
Combinations can be set by end user  
Part Number - boi855/small  
Price - £2.00 Each



## IFAM Laminated Padlocks

Designed with a hardened, zinc-plated case which is rust resistant  
The 7mm shackle is made from carbon-nitride hardened steel  
Includes a double locking mechanism  
Opening system operated by four combination wheels.  
Combinations can be set by end user  
Part Number - boi855  
Price - £4.00 Each



## Low & Fletcher Combination Padlocks

40mm Brass padlock  
6mm Steel shackle  
Opening system operated by four combination wheels  
Combinations can be set by end user  
Part number - lok5100  
Price - £4.00 Each



## Master Lock Dial Combination Lock

48mm wide double-reinforced stainless steel body  
Includes combination chart to facilitate lock system administration  
Control key for supervisory access; specify key to match existing system or factory assigned  
7mm hardened steel shackle for extra cut resistance  
Easy 3-number dialing with automatic scrambling feature to prevent reopening of lock  
Part Number - boi819  
Price - £6.00 Each



## Master Lock Dial Mini Combination Locks

5mm Hardened steel shackle  
40mm wide metal body  
Aluminum cover with durable anodized finish & Bright metallic colors to help simplify locker identification  
3 digit combination opening  
Packed individually and sold in boxes of 4, each box contains 1 of each of the following colours:- Purple, Black, Blue & Red.  
Please note these padlocks can not be ordered individually or by specific colours.  
Price £14.00 per box of 4



## Master Lock Sphero Combination Locks

5mm Hardened steel shackle  
44mm wide metal, double armoured body  
3 digit combination opening  
Easy grip and smooth spin cylinder digit  
Automatic Locking Levers  
Packed individually and sold in boxes of 4, each box contains 1 of each of the following colours:- Pink, Blue, Purple & Red.  
Please note these padlocks can not be ordered individually or by specific colours.  
Price £14.00 per box of 4





HELMSMAN

Northern Way  
Bury St Edmunds  
Suffolk  
IP32 6NH  
United Kingdom

Telephone: +44 (0)1284 727600  
Fax: +44 (0)1284 727601  
Email: [sales@helmsman.co.uk](mailto:sales@helmsman.co.uk)  
[www.helmsman.co.uk](http://www.helmsman.co.uk)

**Sales**

Telephone: +44 (0)1284 727666  
Fax: +44 (0)1284 727601  
[sales@helmsman.co.uk](mailto:sales@helmsman.co.uk)

**Service**

Telephone: +44 (0)1284 727633  
Fax: +44 (0)1284 727603  
[service@helmsman.co.uk](mailto:service@helmsman.co.uk)